



MODERN
E A S T E R N

Stainless Steel Combination Safety Shower & Eyewash Station

Data Sheet and Installation / Operation Instructions

Standard : ANSI Z358.1-2014

MODEL : MD560SS

Product Application

Emergency, eye wash and shower units are designed to rinse contaminants away from the user's eyes, face or body.

As such, these units are forms of first aid equipment to be used in the event of an accident. However, they are not a substitute for primary protective devices (including eye and face protection and protective clothing) or for safety procedures when handling hazardous materials.

MD560SS Stainless Steel Combination Eye Wash / Shower is constructed using SS304 Stainless Steel components for the pipes, shower head and eyewash bowl. The eyewash heads are made in ABS plastic. Ideal for offshore / highly corrosive environments.



Installation Location

In general, the ANSI standard requires that emergency equipment be installed within 10 seconds walking distance from the location of a hazard (approximately 55 feet).

The equipment must be installed on the same level as the hazard (i.e. accessing the equipment should not require going up or down stairs or ramps).

The path of travel from the hazard to the equipment should be free of obstructions and as direct as possible.

The location of the emergency equipment must be marked with a highly visible sign (*Emergency Sign in English provided with the product.*)

Inlet Water Supply

Drinking water or potable water

Hydraulic Pressure and Flow Rate

Recommended inlet water pressure is minimum 2.4 bar to maximum 6 bar. Eyewash flow rate ≥ 11.4 liters/min. Shower flow rate ≥ 75.7 Litres / minute

Technical Data

Head: 304 stainless steel shower head.

Eye Wash Nozzle: green ABS spray, others are 304 stainless steel with 10" waste water recycle bowl

Shower Valve: 1" 304 stainless steel ball valve

Eye Wash Valve: 1/2" 304 stainless steel ball valve

Supply: 1 1/4" FNPT

Waste: 1 1/4" FNPT

Training

Simply installing emergency equipment is not sufficient means of ensuring worker safety. It is also very important that employees are trained in the location and proper use of emergency equipment. Research shows that after an incident has occurred, rinsing eyes within the first ten seconds is essential. Therefore, employees at the highest risk of damaging their eyes in each department must be trained regularly. All employees must know the location of the emergency equipment and be aware that quick and effective rinsing is important in an emergency.

Eye/face Wash

- The sooner the injured employee's eyes are rinsed, the lower the risk of damage. Every second is important when preventing permanent damage to save time for medical treatment.
- All employees must be reminded that this equipment is only to be used in emergencies, tampering with the equipment may cause a malfunction. In emergencies the afflicted person might require the assistance of others to help reach the equipment and use it. There should be no obstruction in the path to the equipment at all times considering the afflicted person might not be able to open their eyes.
- Push the handle to spray the liquid.
- When rinsing the eyes, use both hands' thumb and index finger to open the eyelids, rinsing for at least 15 minutes.
- After rinsing, seek medical treatment immediately.
- HSE and supervisory personnel must be notified that the equipment has been used.

Shower

- Use the pull rod to start the liquid flow.
- The injured should stand in the water flow once it has started.
- Ensure affected areas are in the water flow.
- Do not rinse by hand, to avoid further injury.

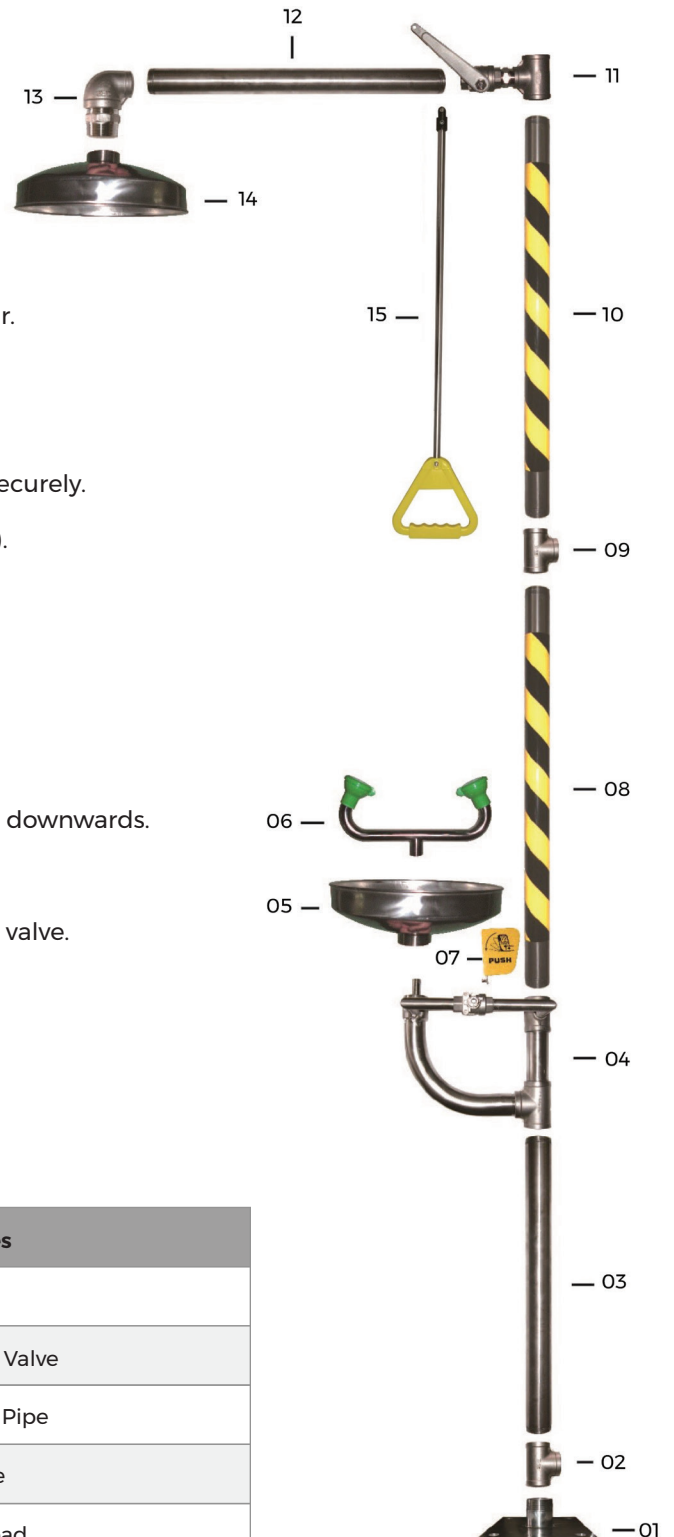
Installation Steps

- 1 Take out the base and fix to the floor.
- 2 Connect the T-type drainage pipe to the base.
- 3 Connect the main pipe to the T-type drainage pipe.
- 4 Connect the main body to the main pipe, facing the user.
- 5 Screw the eye wash bowl onto the main body.
- 6 Screw the eye wash nozzle onto the main body.
- 7 Install the lever onto the main body valve and fasten it securely.
- 8 Connect the main pipe to the main body (warning tape).
- 9 Connect the inlet T-type to the main pipe.
- 10 Connect the main pipe to the inlet T-type.
- 11 Connect the T-type ball valve to the main pipe.
- 12 Connect the horizontal pipe to the T-Type ball valve.
- 13 Connect the elbow pipe to the horizontal pipe, pointing downwards.
- 14 Connect the shower head to the elbow Pipe.
- 15 Connect the pull rod and valve handle to the T-type ball valve.

ATTENTION: Wrap every joint between pipes with PTFE tape.

Accessories & Components

| No. | Accessories | No. | Accessories |
|-----|----------------------|-----|-------------------|
| 01 | Base | 10 | Main Pipe |
| 02 | T-type Drainage Pipe | 11 | T-type Ball Valve |
| 03 | Main Pipe | 12 | Horizontal Pipe |
| 04 | Main Body | 13 | Elbow Pipe |
| 05 | Eye Wash Bowl | 14 | Shower Head |
| 06 | Eye Wash Nozzle | 15 | Pull Rod |
| 07 | Lever | | Instruction Sheet |
| 08 | Main Pipe | | Warning Sign |
| 09 | T-type Inlet Pipe | | |



Installation method of stainless steel eye wash bowl

1



2



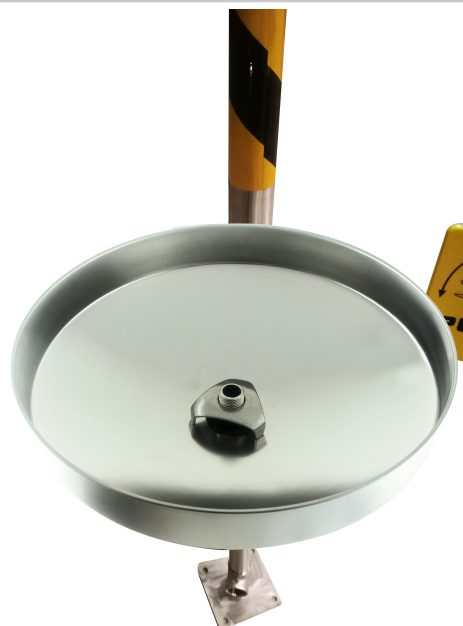
Put the bottom of eye wash bowl in the pipe coupling

3



Put fixed spring to the middle of eye wash bowl

4



Connect the fixed spring to joint of pipe coupling,
then fix the spring

